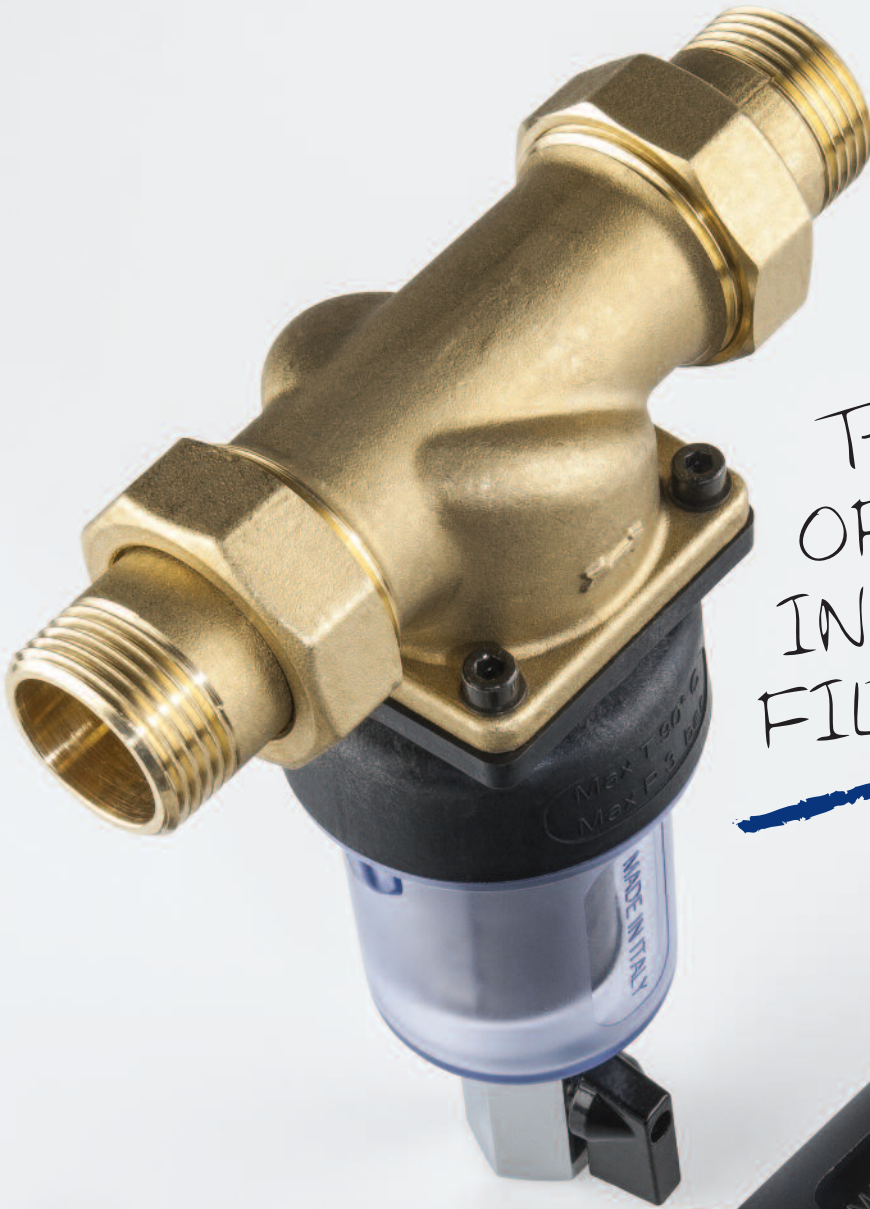


THE STATE  
OF THE ART  
IN WATER  
FILTRATION!



**[new]**  
**HYDROPUL  
CLEANING  
FILTERS**

All the practicality you need,  
in compact and  
reliable solutions

# HYDROPUL cleaning filter for cold water

## CLEANING FILTERS

The **HYDROPUL** cleaning filters are designed with innovative solutions for cartridge cleaning system efficiency, thanks to the cross flow washing that ensures a high level of particle removal from the cartridge. The filter has a nominal rating of 70 micron. When the filtering element is clogged, the drain ball valve at the bottom of the filter simply opens to activate the cleaning operation. The cross flow of water sends the impurities trapped on the outer surface of the cartridge to the drain. When the valve closes, the filter immediately becomes operational again. The **HYDROPUL** filter can be equipped with a drain funnel (optional), a device to protect drinking water from being polluted in hydraulic systems, with the purpose of preventing backflow, in accordance with the UNI EN 1717 European Standard of November 2002. This device prevents backflow, bleeding all the elements into the atmosphere downstream of the drain valve (protection unit symbol: DC).

The **HYDROPUL** cleaning filters are available in 3 main versions for **COLD WATER**:

- HYDROPUL 1 with 3/4" and 1" plastic connections (both in package)
- HYDROPUL 2 with 3/4" brass connections
- HYDROPUL 3 with 1" brass connections

The **HYDROPUL HOT** cleaning filters are available in 3 main versions for **HOT WATER**:

- HYDROPUL HOT 1 with 3/4" and 1" plastic connections (both in package)
- HYDROPUL HOT 2 with 3/4" brass connections
- HYDROPUL HOT 3 with 1" brass connections

## WORKING CONDITIONS

Max working pressure: \_\_\_\_\_ 8 bar (116 psi)  
 Max working temperature \_\_\_\_\_ 45°C (113°F)  
 Min working temperature \_\_\_\_\_ 4°C (39,2°F)

## SPECIFICATIONS

Non-toxic materials, suitable for drinking water.  
 Head:  
 - HYDROPUL 1: reinforced PA66 polyamide.  
 - HYDROPUL 2/3: reinforced PA66 polyamide + CW 617 N brass connection unit.  
 Bowl: SAN.  
 Flat gaskets: NBR.  
 Ball valve: externally nickel-plated CW 614 N brass.  
 Nipple and drain funnel: reinforced polypropylene.



**HYDROPUL 1**

3/4" and 1" plastic

*Top performing and safe with cold water...*



**HYDROPUL 2**

3/4" brass

**HYDROPUL 3**

1" brass

*attention to detail*

**MAKES THE DIFFERENCE!**

**+ NEW RA MINI DEDICATED CARTRIDGE**



-RA MINI-

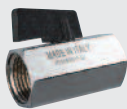
## TECHNICAL FEATURES

Filter cartridge: AISI 304 L stainless steel  
 Filtration rating: 70 µm  
 Filter cartridge end caps: polypropylene  
 O-rings: EPDM

## ACCESSORIES INCLUDED



HYDROPUL spanner



discharge ball valve

## OPTIONAL



plastic hose-holder



drain funnel in compliance with UNI EN 1717/2002

# HYDROPUL HOT cleaning filter for hot water

## WORKING CONDITIONS

Max working pressure: \_\_\_\_\_ 8 bar (116 psi)  
 Max working temperature \_\_\_\_\_ 70°C (158°F)  
 Min working temperature \_\_\_\_\_ 4°C (39,2°F)

## SPECIFICATIONS

Non-toxic materials, suitable for drinking water.  
 Head:  
 - HYDROPUL HOT 1: reinforced PA66 polyamide.  
 - HYDROPUL HOT 2/3: reinforced PA66 polyamide + CW 617 N brass connection unit.  
 Bowl: reinforced PA66 polyamide.  
 Flat gaskets: NBR.  
 Ball valve: externally nickel-plated CW 614 N brass.  
 Nipple and drain funnel: reinforced polypropylene.



**HYDROPUL HOT 1**  
3/4" and 1" plastic



**HYDROPUL HOT 2**  
3/4" brass

**HYDROPUL HOT 3**  
1" brass

*Unbeatable with hot water!*

## INSTALLATION SCHEME

