

THE LIMESTONE

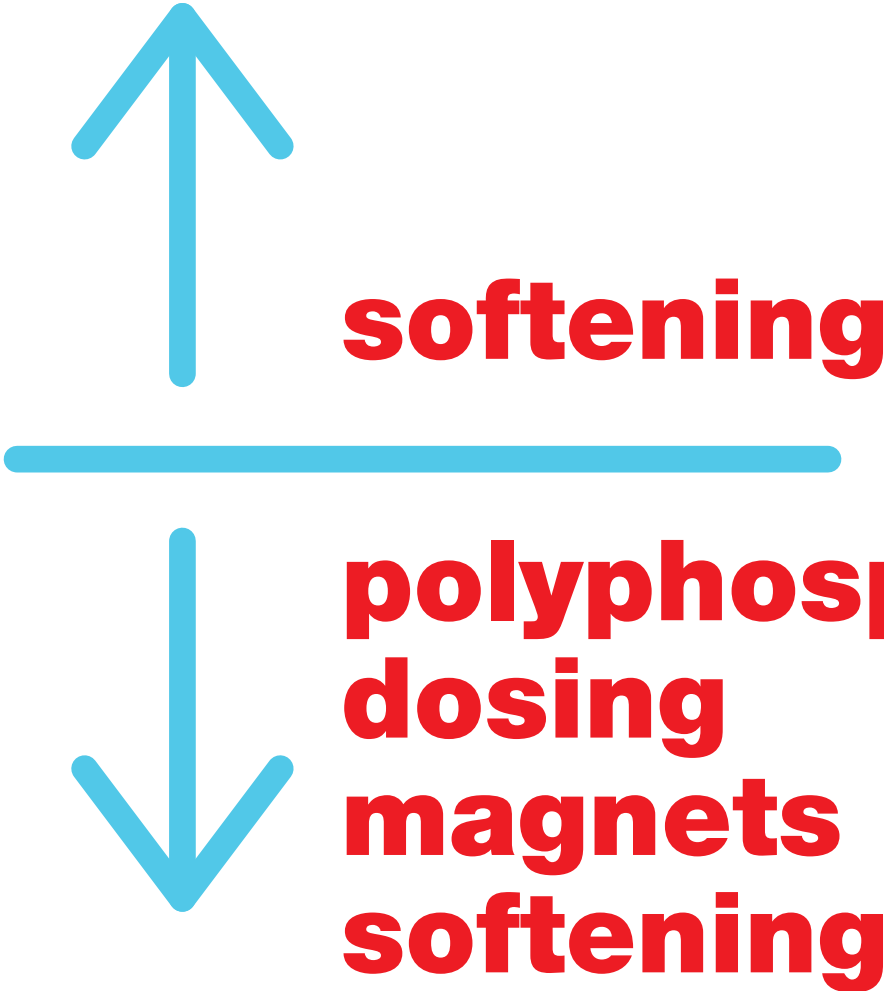
and the solubility of Calcium
and Magnesium Carbonates

MAIN PROBLEMS

- **Limestone = Insulating** (loss of thermal efficiency)
- **Limestone = Surfactant antagonist** (greater consumption of detergents and soap)
- **Limestone = Spots and deposits** (tableware, cars, etc.)
- **Limestone = Aesthetic problems** (rough linen, unpleasant sensations on hair and skin)

HARDNESS Indicator Parameter (°F)

15°F

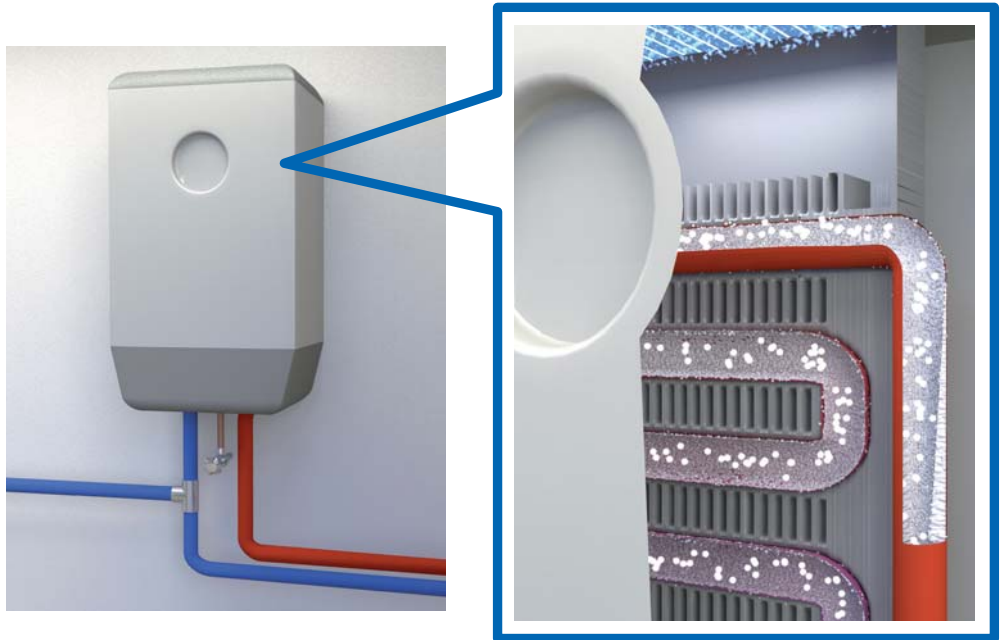




➤ polyphosphate dosing: powder



➤ polyphosphate dosing: crystals



➤ polyphosphate dosing: liquid - DOSAPUMP LP



➤ polyphosphate dosing: liquid



mag MF



mag FF



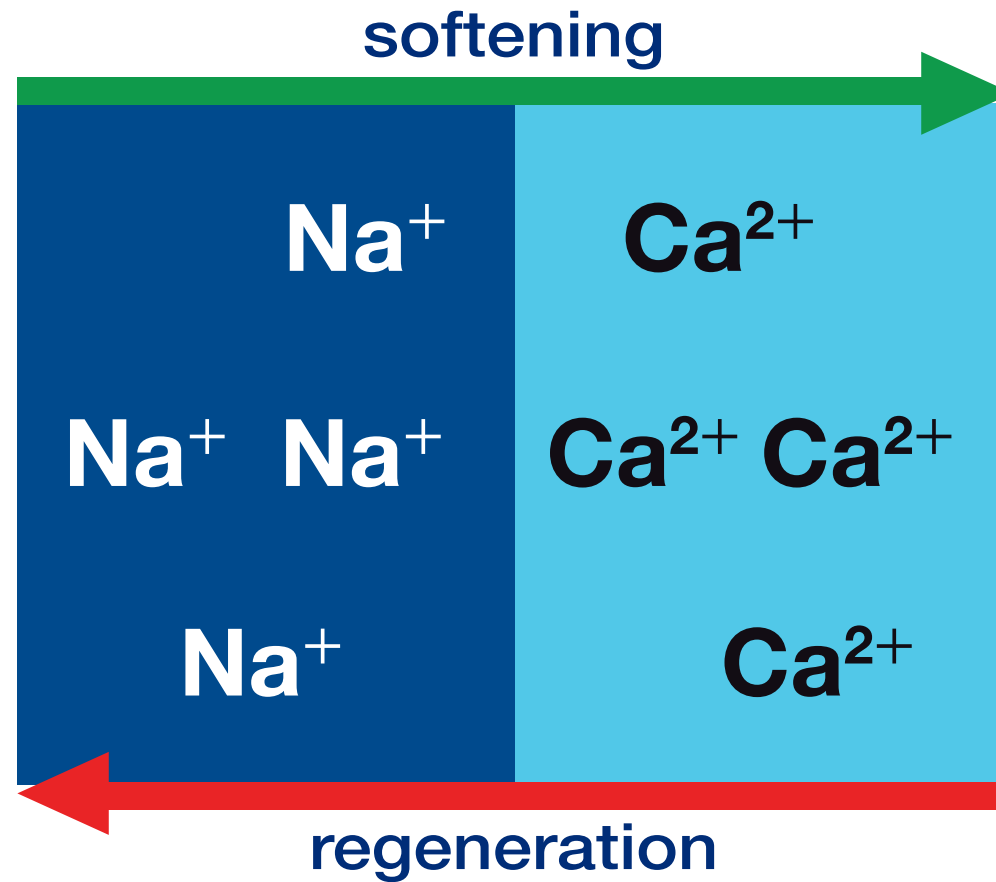
mag MM

➤ magnets



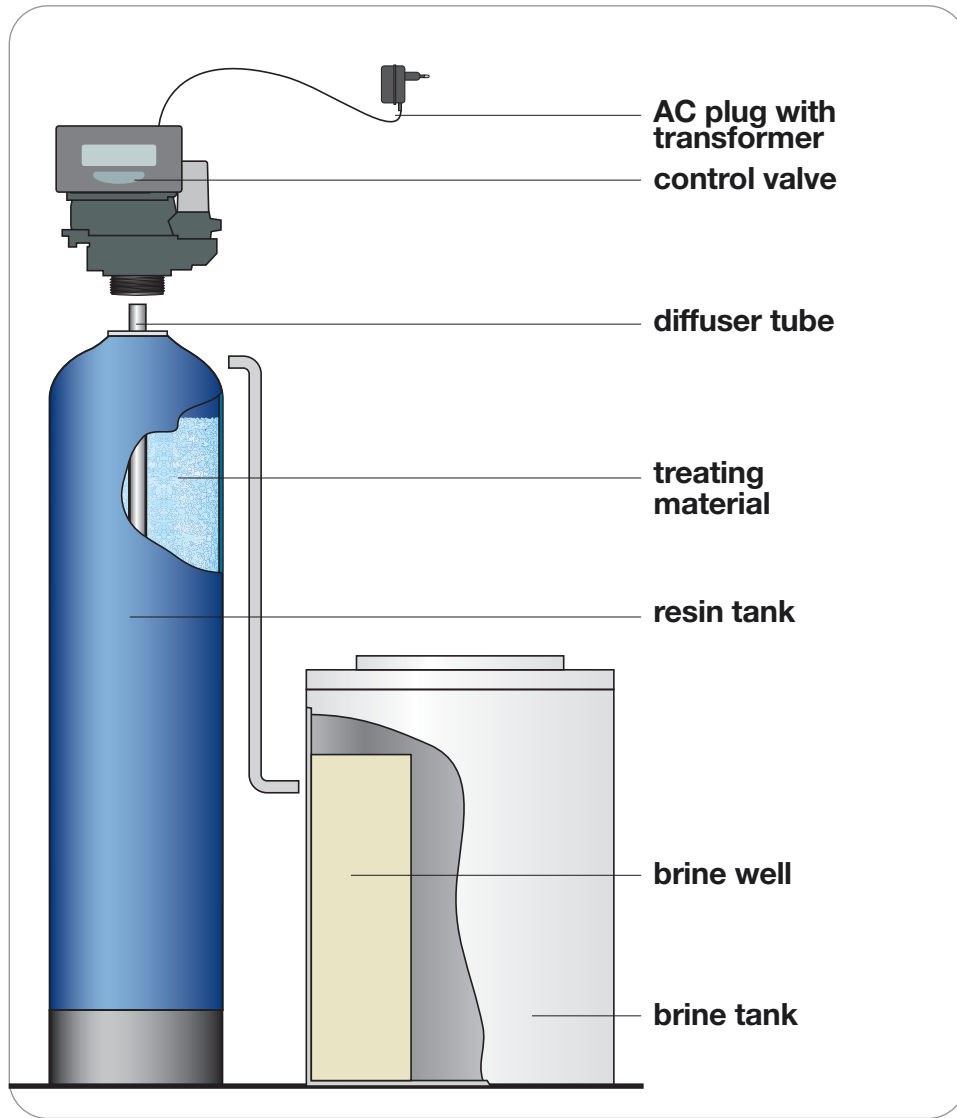
➤ softening

Operating Principle of a WATER SOFTENER



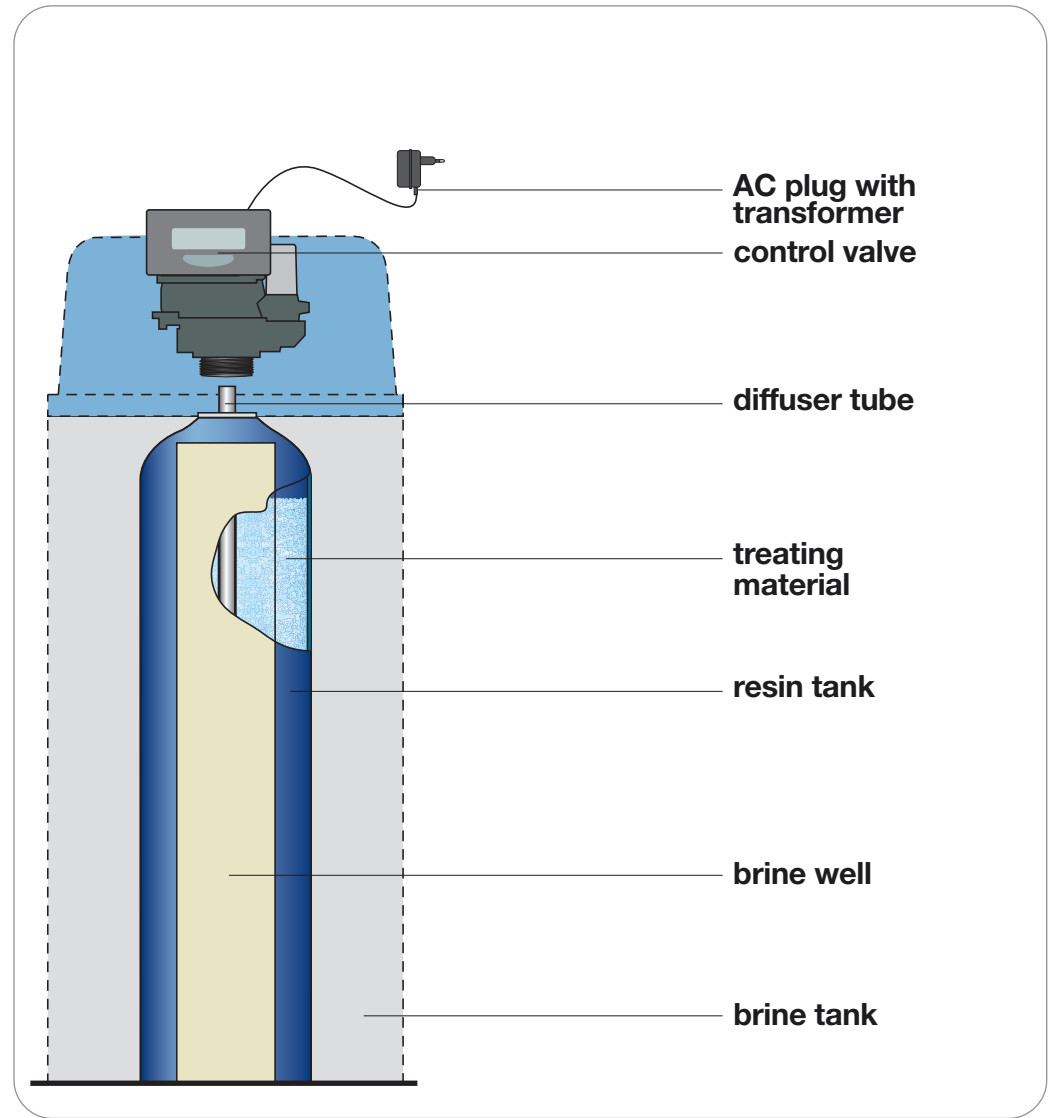
› softening

double body softeners



➤ softening

water softeners



DM 443/90 - Home softeners

- Device for the **automatic regeneration** of resins at least once every 4 days;
- Resin **auto disinfection** device;
- **Mixer** for maintaining the recommended residual hardness of 15 °F (150 mg/l)
- **Sodium** contents in the water not exceeding 200 mg/l of Na (law 31 on drinking water)

› softening

formulas

$$\text{resin volume [l]} = \frac{\text{daily consumption [m}^3\text{]} \times \text{hardness [}^\circ\text{F]} \times \text{regeneration interval}}{5,5}$$

$$\text{cyclic capacity [m}^3 \times ^\circ\text{F]} = \text{resin volume} \times 5.5$$

$$\text{salt consumption [g]} = \text{resin volume} \times 180 \text{ g}$$

› cycle calculation

GUIDE TO THE CHOICE OF MODEL

NUMBER OF USERS	WATER CONSUMPTION LITRES/DAY	water hardness in °F and in ppm				
		15-25°F 152-250 ppm	26-35°F 260-350 ppm	36-45°F 360-450 ppm	46-55°F 460-550 ppm	56-65°F 560-650 ppm
2	500	JUPITER 10	JUPITER 10	JUPITER 10	JUPITER 15	JUPITER 15
3 - 5	750 - 1250	JUPITER 15	JUPITER 30	JUPITER 30	JUPITER 30	JUPITER 50
6 - 10	1500 - 2500	JUPITER 30	JUPITER 50	JUPITER 50	JUPITER 70	JUPITER 70
11 - 15	2750 - 3750	JUPITER 50	JUPITER 70	JUPITER 70		
16 - 20	4000 - 5000	JUPITER 50	JUPITER 70			
21 - 25	4250 - 6250	JUPITER 70				

› softening

Autotrol Electronic Automatic Valves



TIME and VOLUME versions

➤ softening



➤ softening